

I. INTRODUCTION & BACKGROUND

The proposed RIMAC Expansion & Renovation project would expand and renovate the existing RIMAC facility to accommodate the growing population at UC San Diego with enhanced recreational offerings and additional spaces to meet the various physical and mental needs of the University community.

II. PROJECT SITE & PROGRAM

The RIMAC facility is located in the La Jolla campus, within the North Campus neighborhood. The facility is bound to the west by Ridge Walk, to the north by RIMAC Annex, west by Hopkins Drive and south by the San Diego Supercomputer Center (Figure 1).

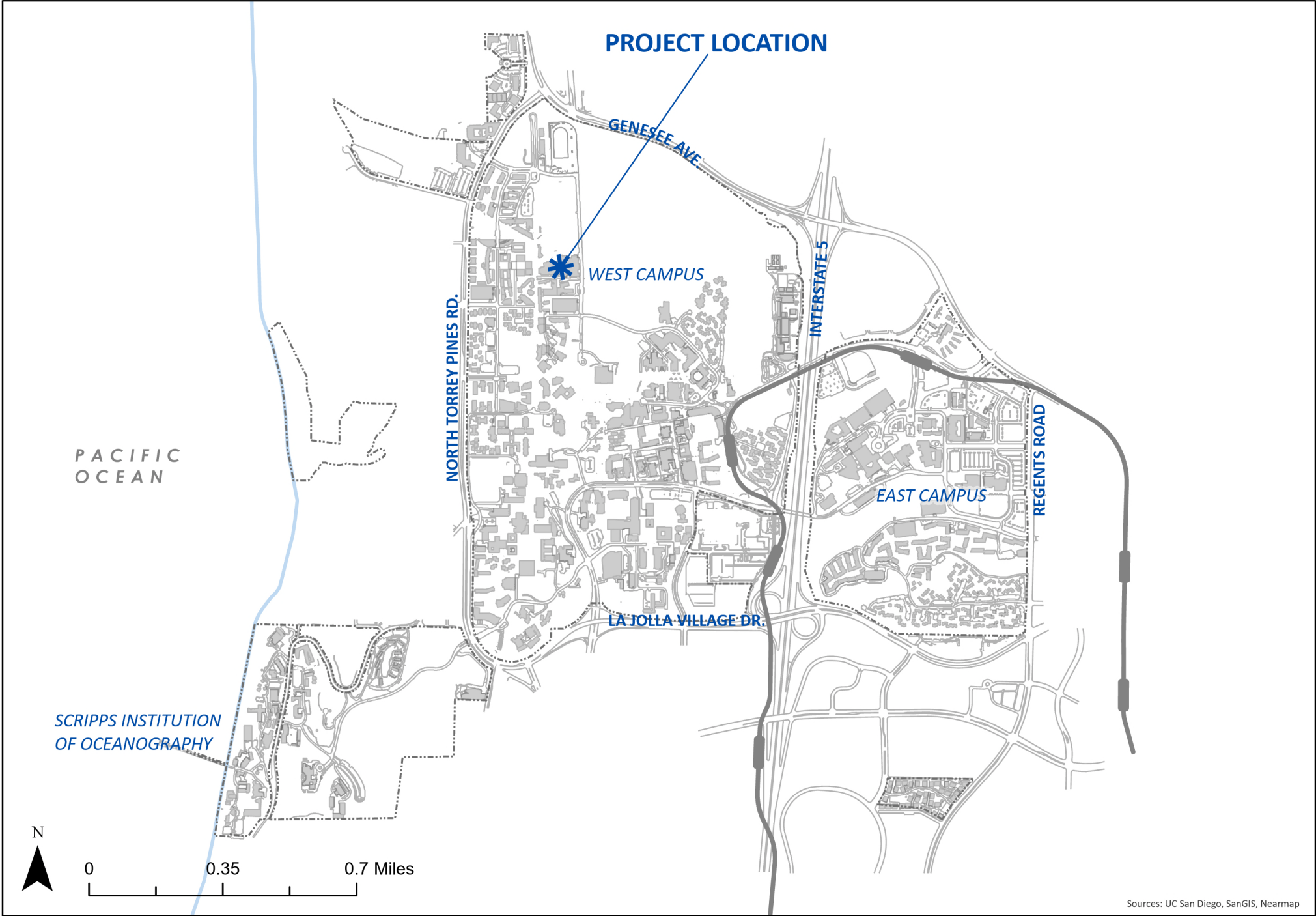
The project encompasses approximately 20,000 gross square feet of expanded and renovated space. The building footprint will be expanded at the facility's northwest corner, shifting the entrance at level 3 west, closer to Ridge Walk, and expanding upper level 4. In 2016 the University engaged consultants to evaluate the expansion potential at RIMAC in light of future demands for recreation space. A location at the northwest corner of the building was determined most appropriate for this expansion. This location currently provides passive seating and

queuing below a shady bosque of trees. It is understood that the new project will need to continue to provide this amenity both within the new space and in the public realm at Ridge Walk adjacent to the expansion. The expansion footprint is approximately 5,300 square feet (Figure 2). The project will also renovate levels 2-4: level 2 will include rejuvenation space, functional fitness, spin, golf, and racquetball, an expansion of level 3 will include reception, fitness & top rope climbing, and lastly, level 4 will include stretching and bouldering.

The project is intended to begin Summer 2024 and continue for two years, with completion Fall 2026.

VII. CONCLUSION

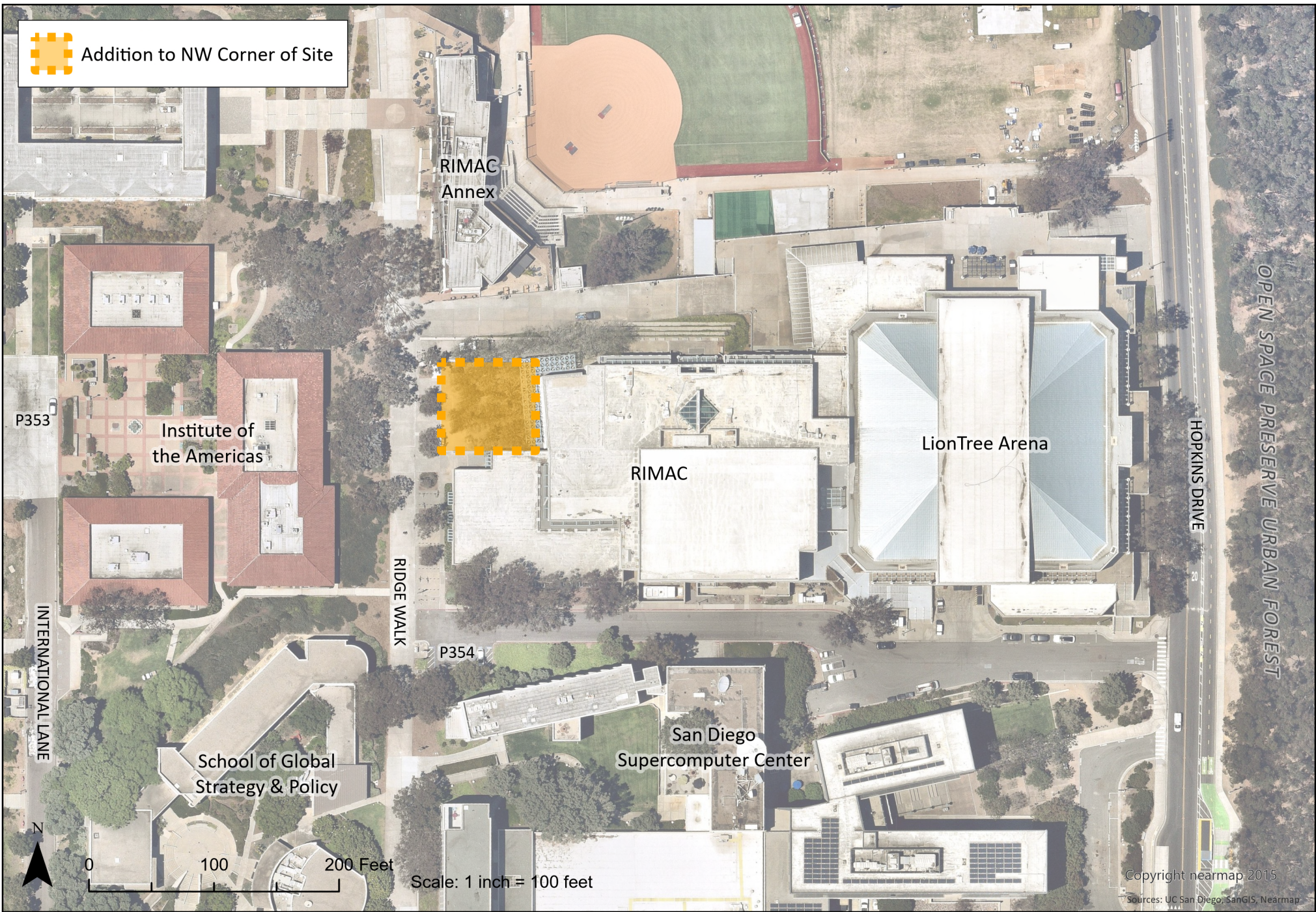
This project will be presented as a Business Item at the November 16, 2023 C/CPC meeting and will return with the Schematic Design at a subsequent meeting. The C/CPC will have the opportunity to comment on the Schematic Design before the project moves into Design Development.



Sources: UC San Diego, SanGIS, Nearmap

RIMAC Expansion & Renovation
 Project Location - Figure 1

Created 11/8/2023



RIMAC Expansion & Renovation
Project Site - Figure 2

Created 11/8/2023