

April Brown Bag Presentations

Presentation 1: Campus Bee Removal Policy

Presentation 2: Shuttle Route Optimization Plan



Campus Bee Removal Policy and Process

Agenda

- Active Bee Season
- Campus Policy - Integrated Pest Management
- Who is Responsible for Removal – EH&S or FM?
- FY16/17 FM Bee Treatment Metrics
- Area for Improvement

Active Bee Season Late Spring

- Swarming is a natural phenomenon for honey bees and is part of the natural process.
- The hive has filled to capacity and the bees make a collective decision to split in half. A new queen is created and departs with half of the hive as a swarm to look for a new home.
- Before departing the bees will gorge themselves on honey in order to produce a new wax comb in their new home – and as such are generally sluggish.
- Thus, swarms are generally non-aggressive and will not harm you if left alone.



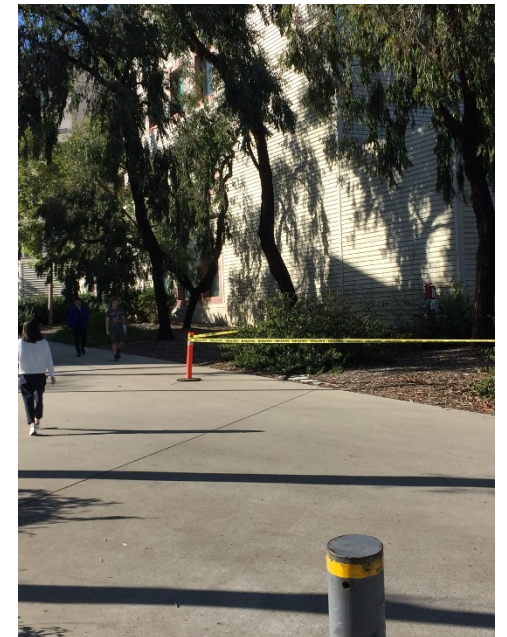
Active Bee Season Late Spring

- Once they establish a new hive, however, they will aggressively guard it and so these should be left alone and avoided.



Integrated Pest Management

- The campus uses an Integrated Pest Management (IPM) approach to determine what response method is appropriate given the specific “Pest”.
- IPM employs physical, mechanical, educational, and biological methods to limit/minimize the problem.
- For Bee’s – the basic process is to create a physical “space” barrier for both swarms and bee hives.



Integrated Pest Management

- For swarms, these barriers will remain in place until the swarm moves on.
- For hives, these barriers will remain in place until the hive can be safely removed.



Integrated Pest Management

- Swarms or Hives will only be destroyed as a last resort when a physical space cannot be maintained and:
 - 1) The bees pose an immediate safety risk to the campus population.
 - 2) The bees are extremely aggressive and are considered to likely be “Africanized”.

Who is Responsible for Removal EH&S or FM?

- If the bees are within a 20 foot radius of a facility – EH&S takes responsibility.
- Outside of that radius – FM takes responsibility.
- FM's Pest Management Contractor – Corky's Pest Control

FM FY16/17 Bee Treatment Metrics

- Total number of FM bee removal calls: 7
- Number of which the hive was successfully removed: 5
- Number of times the hive had to be destroyed: 2
 - NCRA Tennis Courts – Hive was adjacent to a tennis match with players & attendees who were allergic to bees
 - Geisel Library – Africanized bees
- Number of times successfully set up barriers for bee swarms: 5+

Areas for Improvement

- Post Removal Action Clean-up: We need to do a better job to ensure we clean-up any destroyed bees following any type of removal action as the stinger in dead bees can still deliver the venom if contact is made.
- FM is in the process of updating our “Bee Removal SOP” to ensure we better address the above concern and maintain a consistent response to all future bee response.

Questions/Comments

UC San Diego

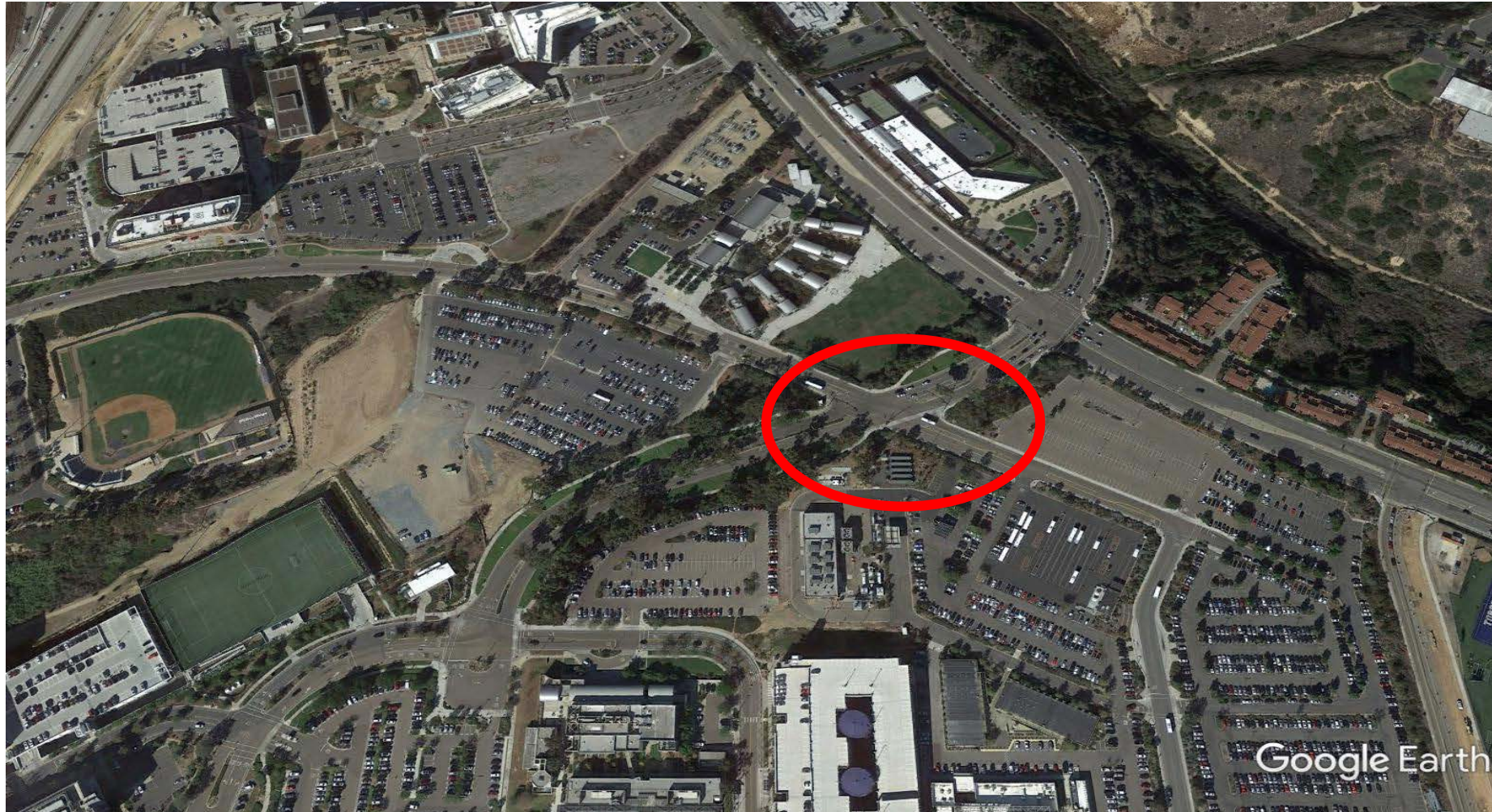
Facilities Management

Shuttle Route
Optimization Plan

Agenda

- LRT Construction Impacts
- Hillcrest & Regents Route Changes
- Coaster Route & Schedule Changes
- Mesa & SIO Optimization Plan
- Communication Plan

Construction Work Campus Point & Voight Drive Intersection



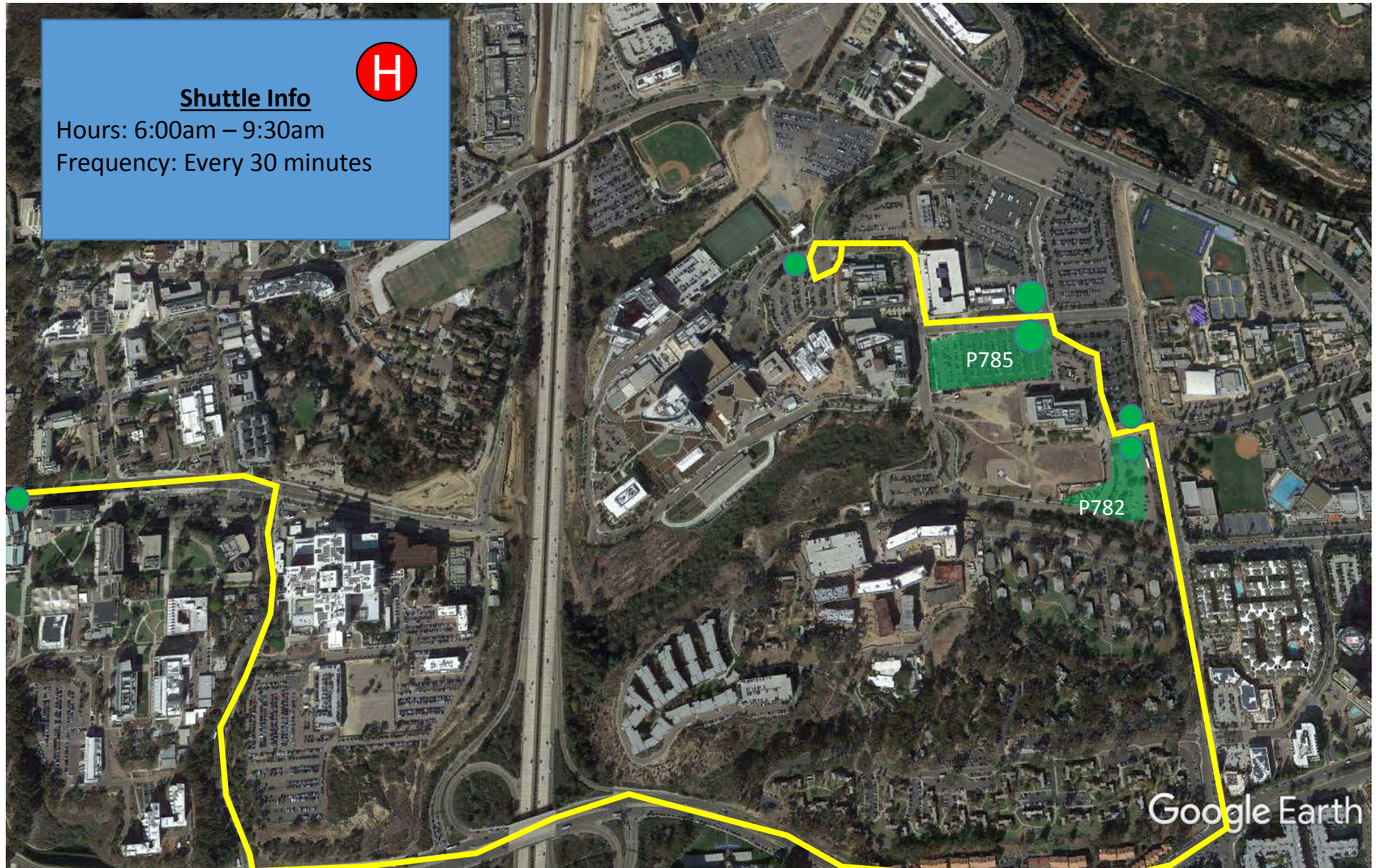
LRT Construction Impacts

- Intersection Project Scope: LRT construction & realignment of campus point
- Intersection Roadway Restrictions: At times will require flag man to control directional traffic. Road narrowing will severely impact right turns for buses.
- Construction Duration: MAY17 – MAY19
 - Advised that impact will last at least the next 2 years.
- Proposed Revised Shuttle Routing to avoid intersection:
 - Hillcrest
 - Regents
 - Coaster

crest - Current

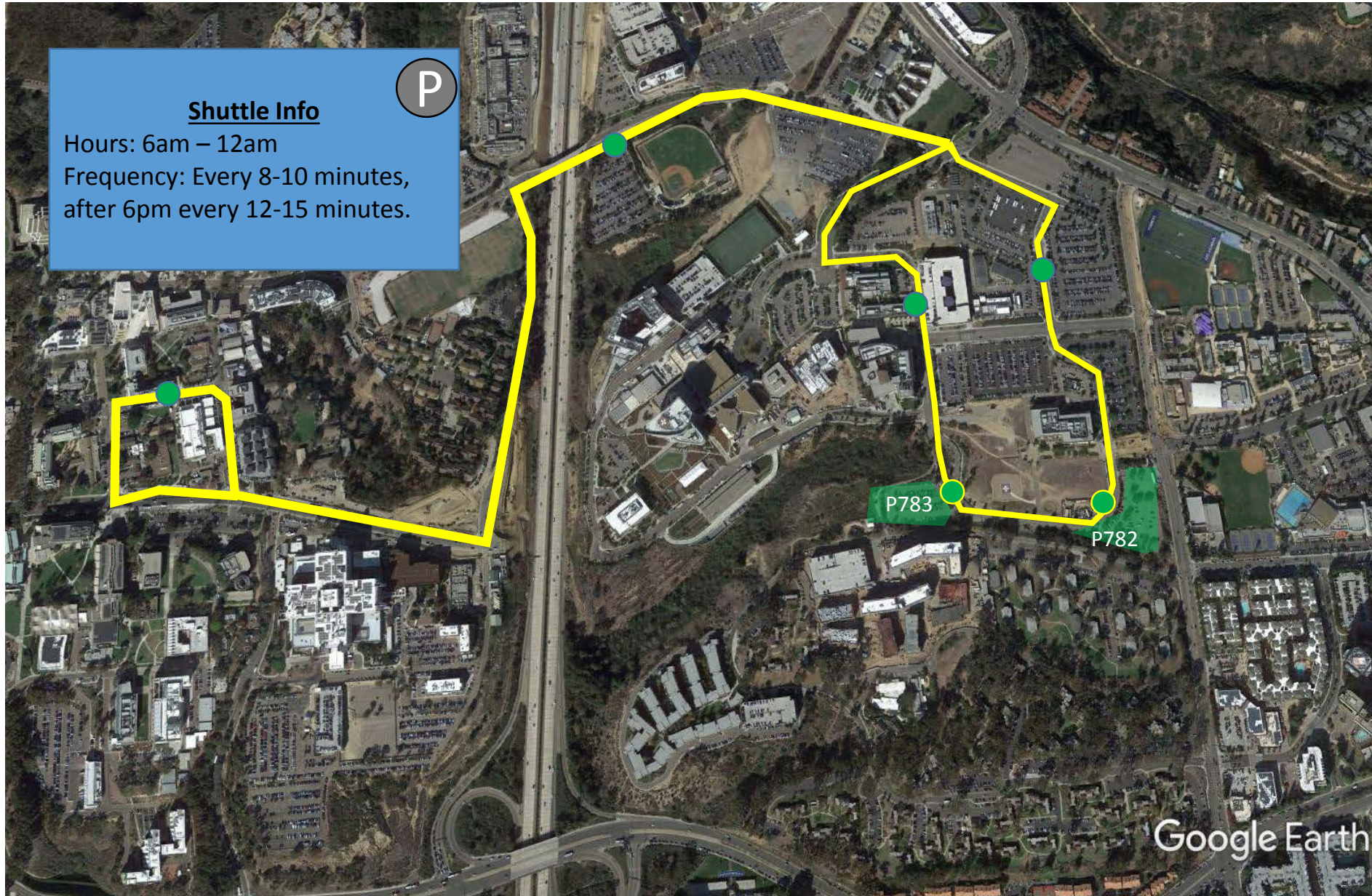


crest - Revised



UC San Diego Facilities Management

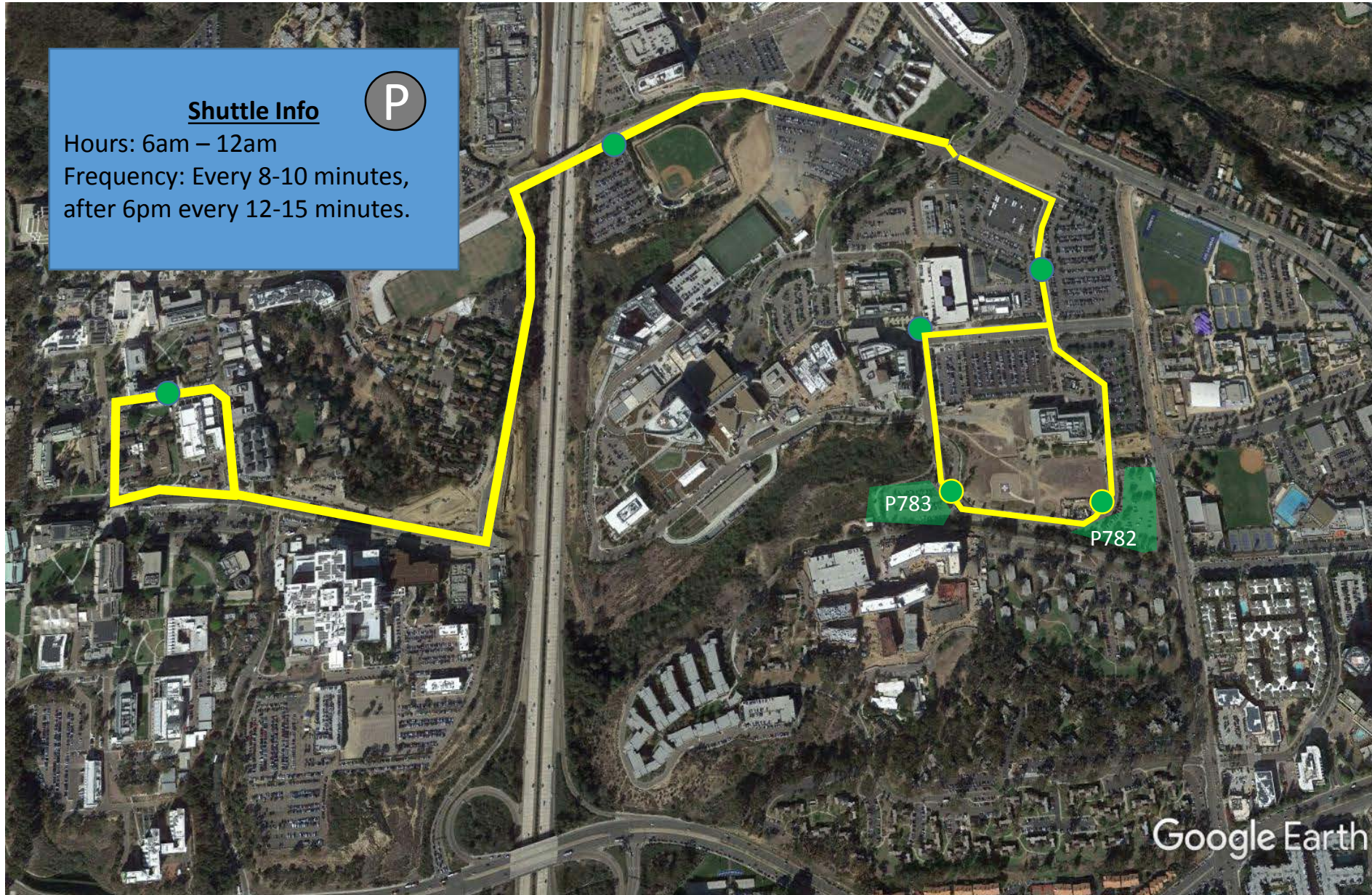
Paragents - Current



Paragents - Revised

UC San Diego
Facilities Management

Shuttle Info P
Hours: 6am – 12am
Frequency: Every 8-10 minutes,
after 6pm every 12-15 minutes.

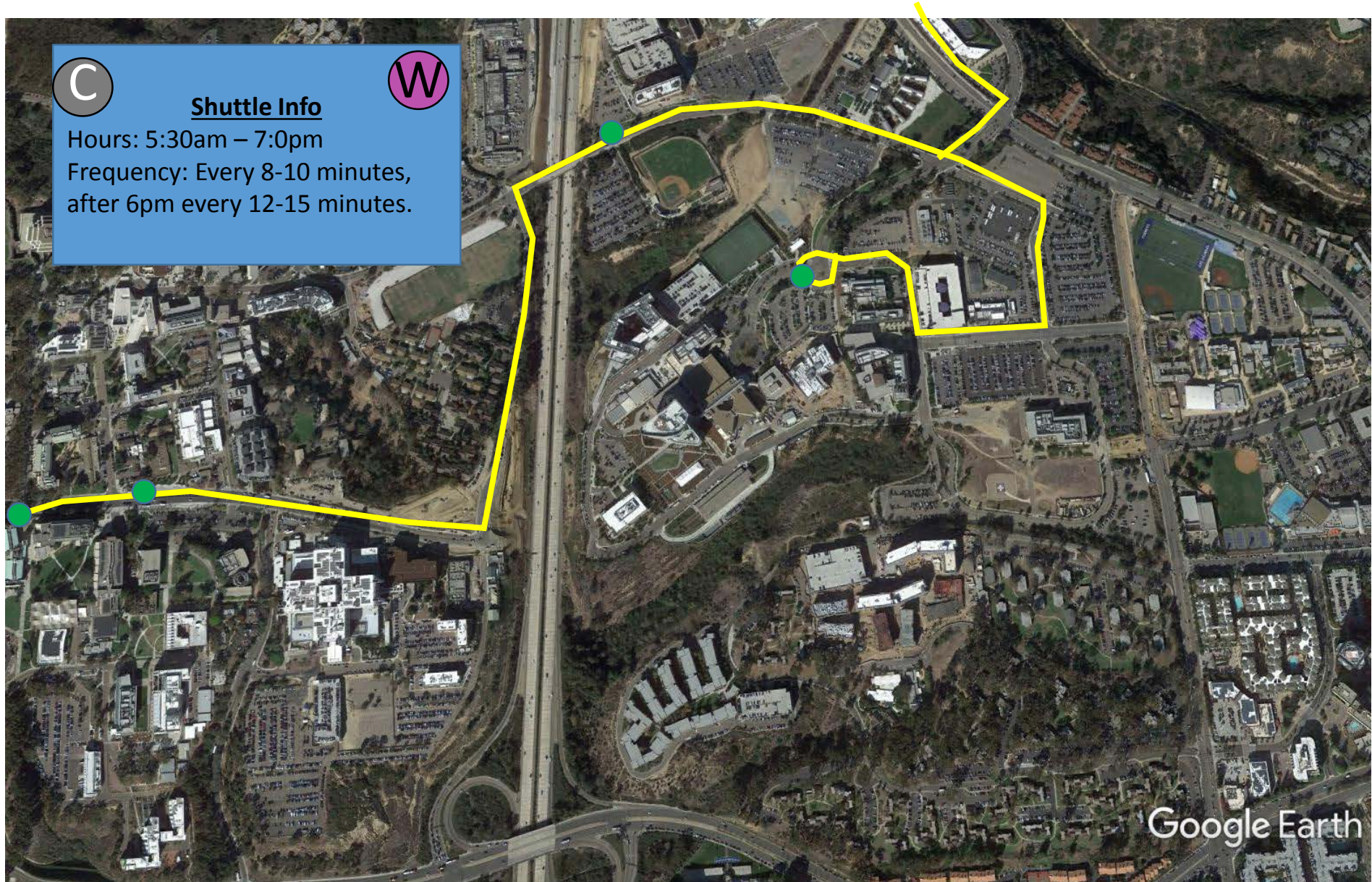


Coaster - Current

UC San Diego
Facilities Management



Coaster - Revised



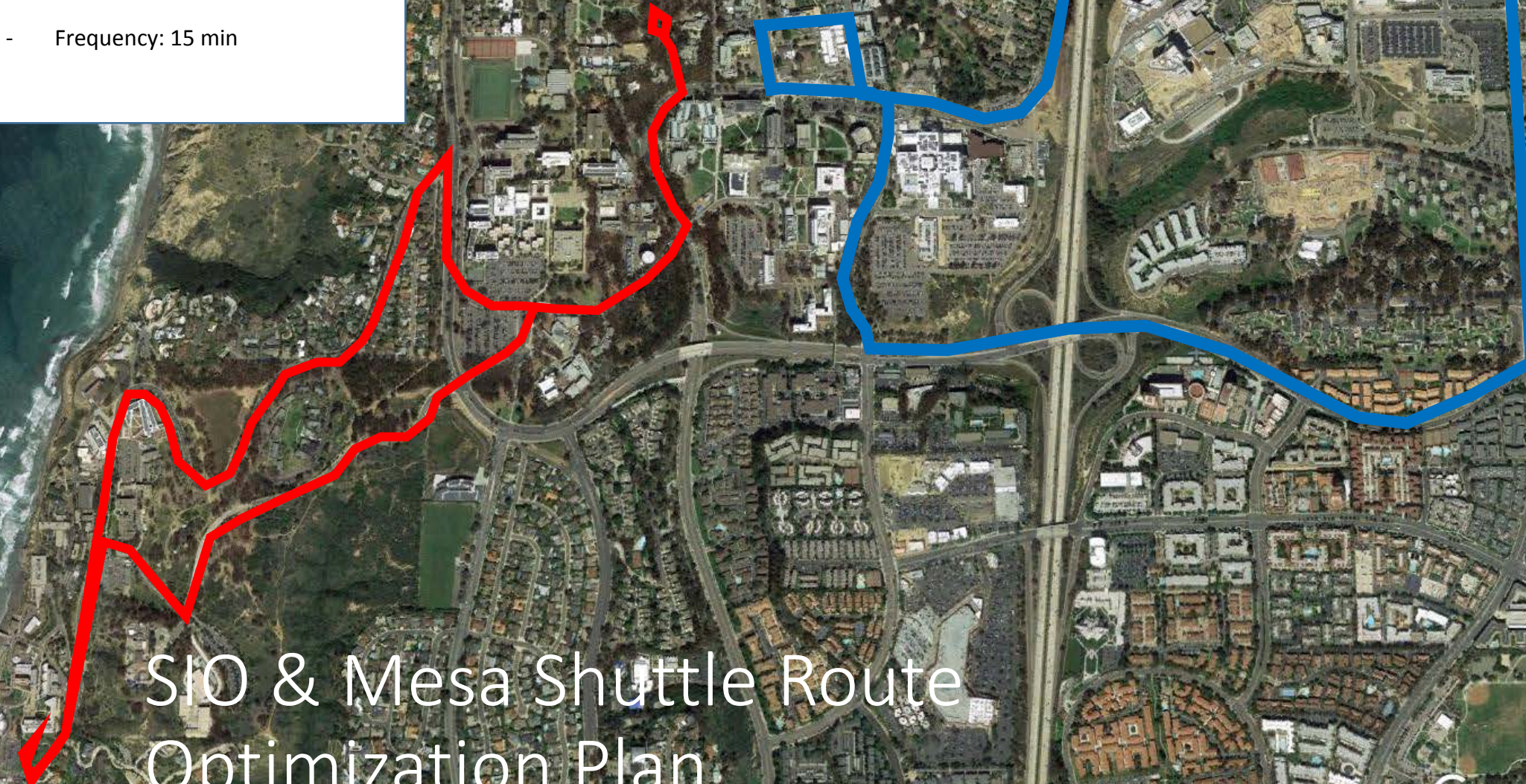
Revised Coaster Schedule

PM

Rupertus Ln.	Mandeville Ln.	Osler Ln.	Revelle Parking	Revelle College Dr.	Muir College Dr.	North Point	Hopkins	P510	Thornton Hospital	Coaster Train
3:05	3:08	3:10	3:20	3:20	3:22	3:25	3:28	3:30	3:35	4:06
3:48	3:50	3:55	4:00	4:03	4:05	4:08	4:10	4:12	4:17	4:51
4:18	4:20	4:25	4:32	4:32	4:35	4:38	4:40	4:42	4:47	5:24
5:15	5:18	5:20	5:25	5:30	5:32	5:35	5:38	5:40	5:45	6:08
5:48	5:50	5:55	18:00	6:03	6:08	6:10	6:13	6:15	6:20	6:54
6:30	6:34	6:36	6:41	6:46	6:49	6:51	6:55	6:57	7:05	7:43

Current Shuttle Routes

- Mesa (2 Busses)
- SIO (2 busses)
- Frequency: 15 min



SIO & Mesa Shuttle Route
Optimization Plan

Planned Shuttle Routes

- Mesa/SIO (4 Busses)
- Frequency: 10 min

SIO & Mesa Shuttle Route
Optimization Plan

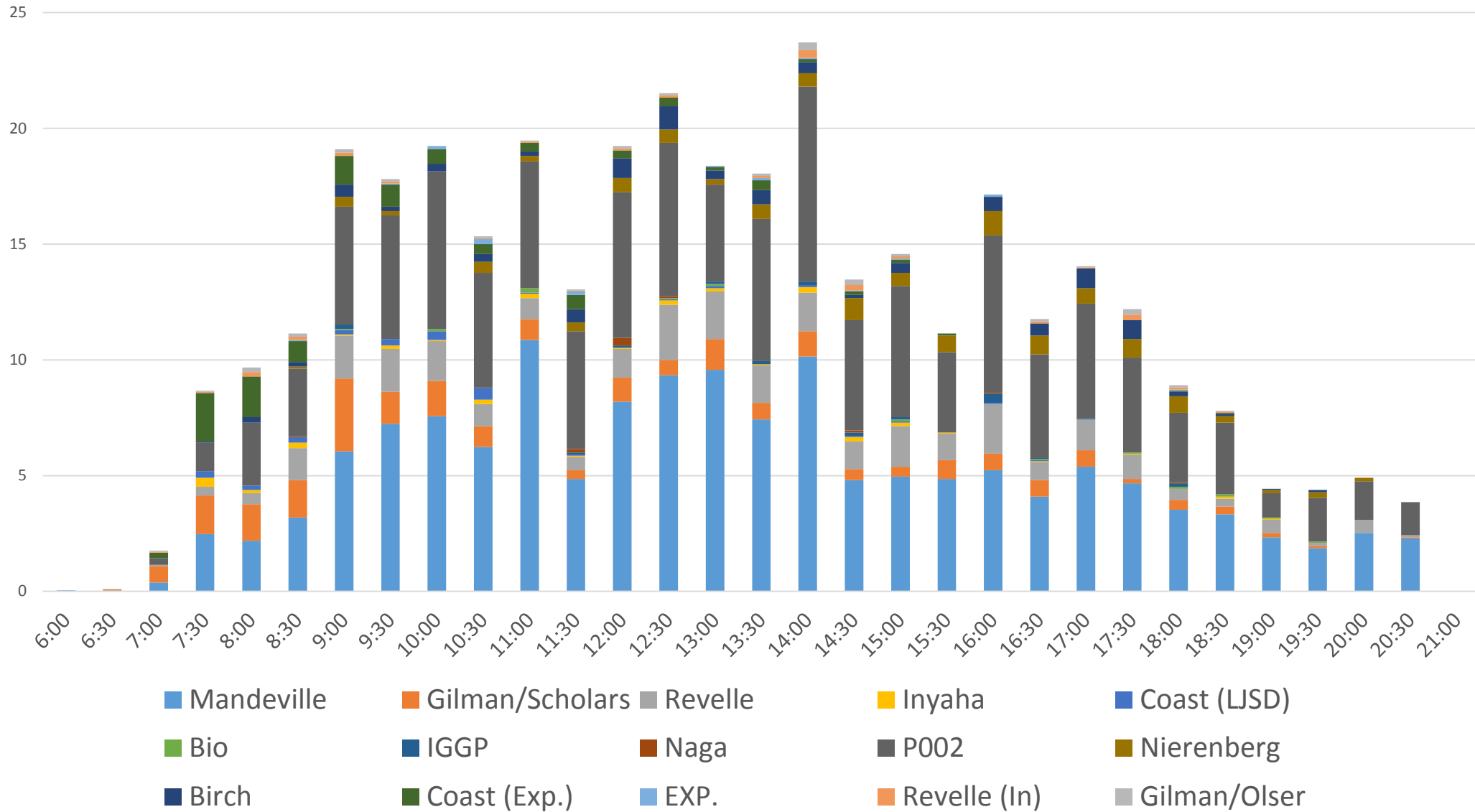
Planned Shuttle Routes

- SIO Route (1 Bus)
- Frequency: 30 min



SIO & Mesa Shuttle Route
Optimization Plan

Projected Ridership



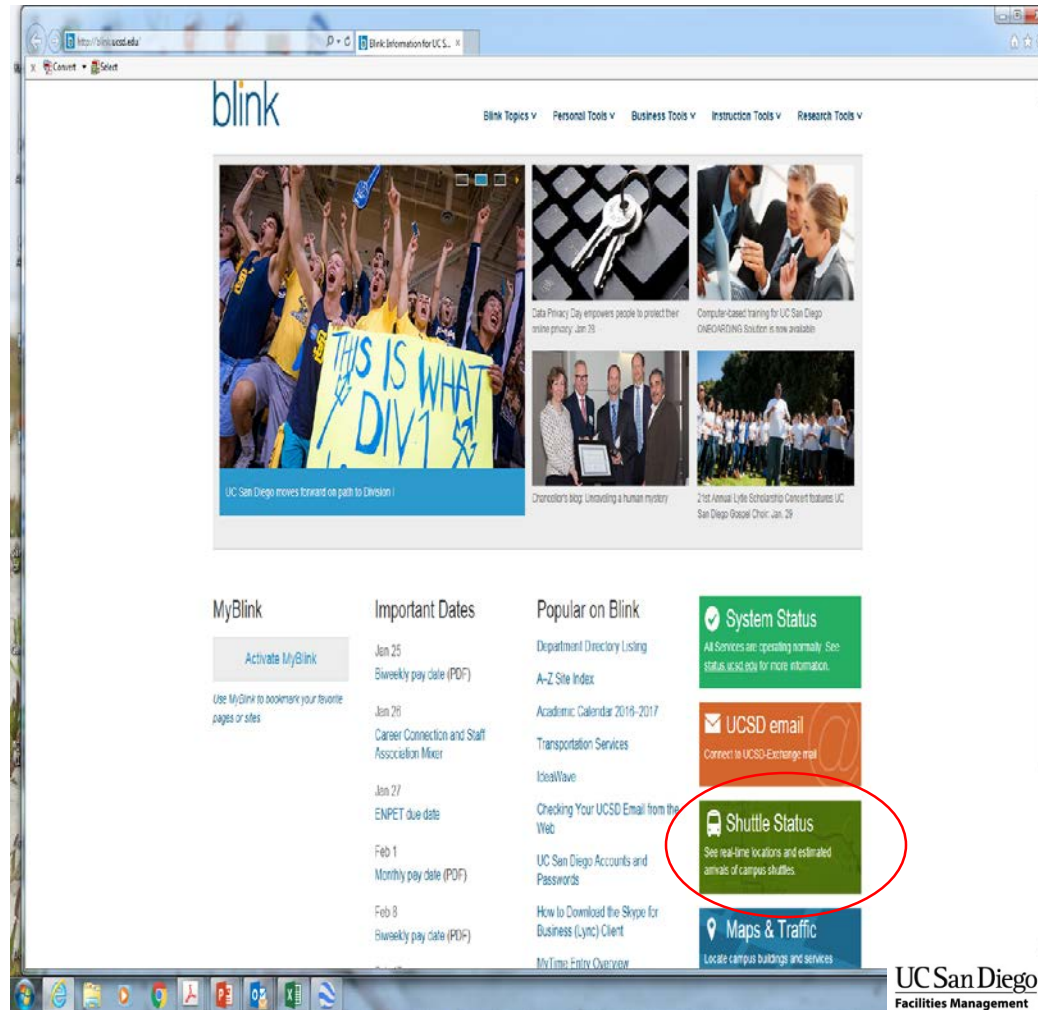
Communication Plan

- Website Notification & Request for Feedback: FEB17, no feedback/comments received to date.
- Coaster Changes
 - Campus Town Hall Event: Wednesday, 03MAY17, 11am – 1pm
 - Price Center Ballroom West A
- SIO & Mesa Changes
 - SIO Forum: Early to mid-May
 - Graduate Student Association: Early to mid-May

Shuttle Operations

Shuttle Service Information

- Please visit our Blink website for complete shuttle information:
 - 1) Live shuttle location information for all routes
 - 2) Hours & pick-up/drop-off Frequencies
 - 3) Shuttle Stop locations
 - 4) Construction related info
 - 5) Service changes & alerts
 - 6) Contact Information
 - (858) 534-2230



QUESTIONS or COMMENTS