

November Brown Bag Lunch Presentations

Presentation 1: Campus Planning Updates

UC San Diego

Campus
Planning
Updates

FM Brown Bag

Nov 28, 2017



- 
- 1. Campus Plan Overview**
 - 2. Trolley (LRT) Update**
 - 3. Regional Transportation Projects Update**
 - 4. Fire Station Status**

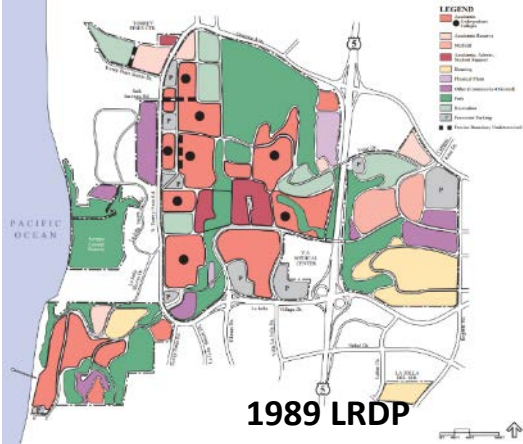
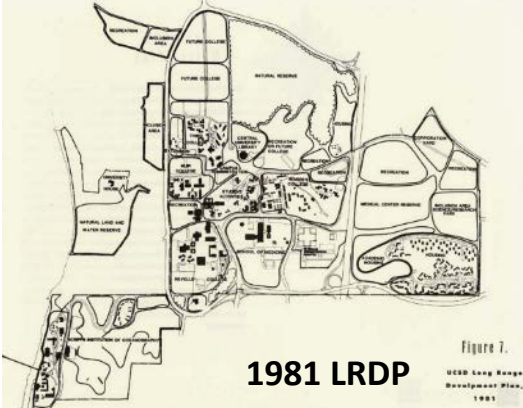
The Campus Today



- 1,158 Acres
- 16 Million GSF
- 630+ Buildings
- Over 400 Acres of Open Space
- 36,000+ Students
- 14,500 Housed
- 50,000 Total Daily Population
- Nearly 60% Alternative Transportation Use



The Long Range Development Plan (LRDP) is the official Land Use Planning policy guide for the campus



- 15-20 year planning horizon; previous LRDP's in 1963, 1966, 1981, 1989 and 2004
- A capacity plan that estimates the “outer envelope” for growth (population and development)
- The UC Regents approve the LRDP and its Program Level EIR (July 2018)

2018 Long Range Development Plan

	Fall 2015 Baseline	2018 LRDP (2035 Horizon)	Anticipated Growth Under 2018 LRDP
Student Enrollment	32,850	42,400	+9,550
Total Campus Population	48,850 (16,000 staff and faculty)	65,600 (23,200 staff and faculty)	+16,750
Development Gross Square Feet	15.7M (3.3M in design or construction)	-1.2M (Demo) 9.8M (New)	+8.6M
Campus Housing	14,500 Beds	30,000 + Beds	+16,000 Beds

Development Strategies

Development of **additional housing** is a campus and system-wide priority

Addresses affordability for students

Better academic achievement

Provides regional benefits



Development Strategies

Expand **Retail Services and Amenities** to support a growing population

Create a more livable, vibrant and lively campus environment

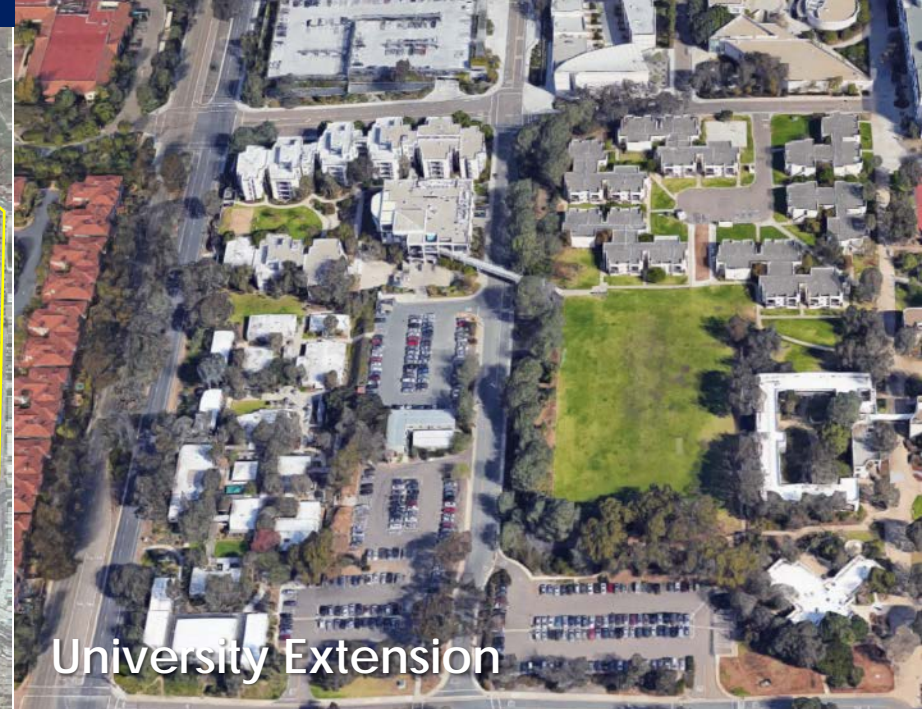


Development Strategies

Through strategic redevelopment, remove obsolete buildings, redevelop low-density areas and grow within our boundaries



Mesa Housing



University Extension

Development Strategies

Renovate labs, repurpose and optimize underutilized space

Improved space usage will help address projected growth needs in a sustainable manner



North Torrey Pines Renovation



Muir Biology Building Reno



Galbraith Hall Repurposing

Projects in Construction



1. Biological & Physical Sciences
2. Outpatient Pavilion
3. Center for Novel Therapeutics
4. Mesa Nueva Housing (complete)
5. Gilman Drive Bridge
6. Osler Parking Structure
7. Light Rail Transit

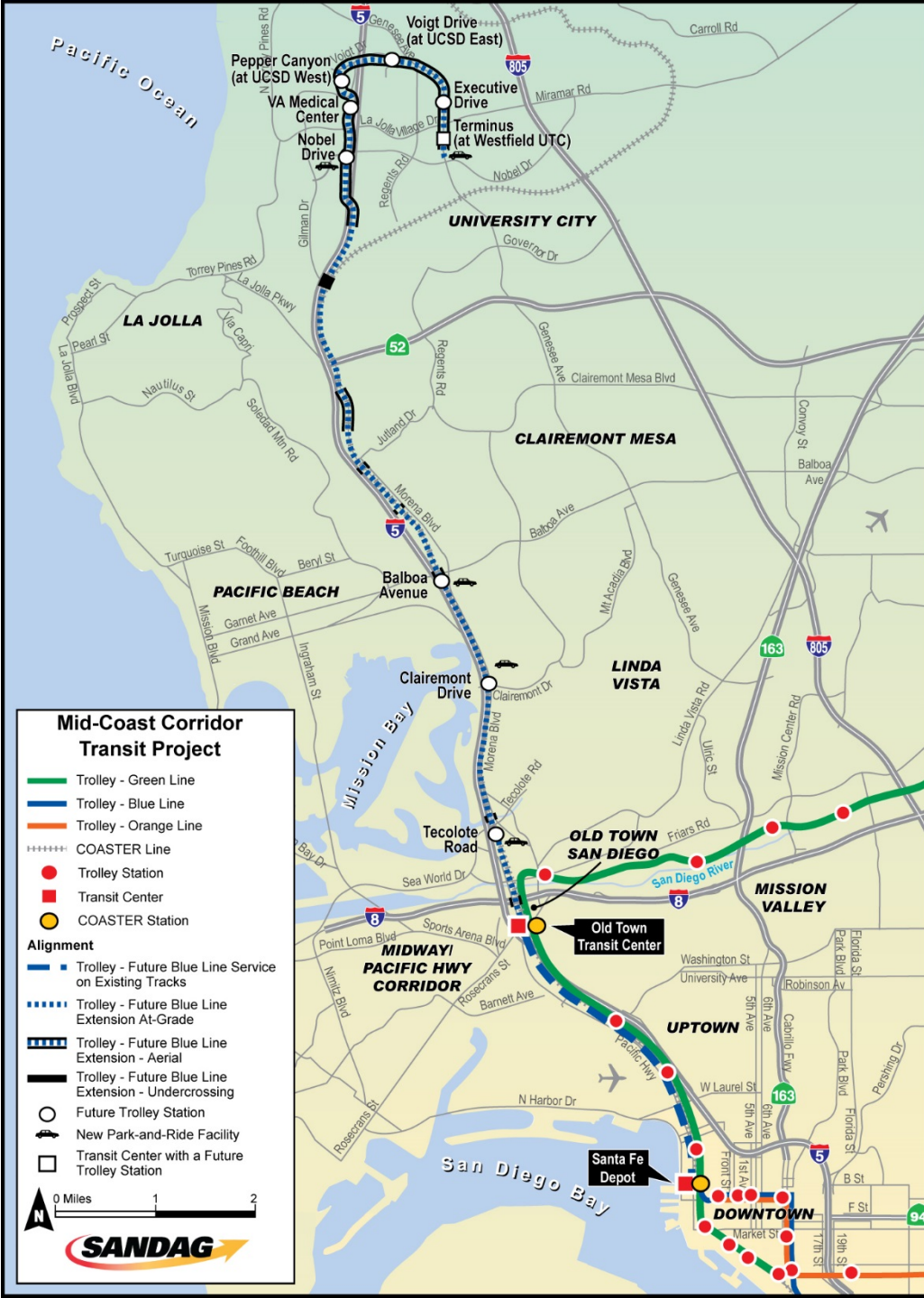
Projects in Planning or Design



1. Mesa Nuevo West
2. Mesa Nuevo East
3. Faculty and Staff Housing
4. Hotel and Conference Center
5. North Torrey Pines Living & Learning Neighborhood
6. Voigt Parking Structure
7. Engineering Interdisciplinary Building
8. Design & Innovation (SME2)
9. Triton Pavilion Gateway Complex
10. Fire Station
11. Faculty Housing
12. SIO Marine Conservation Facility

Trolley (LRT) Update





- 11 Mile Extension of the Blue Line
- \$2.1B (Local and Federal Funds)
- 9 Stations
- 7.5 Minute Headways at Peak Commute
- Over 20,000 Estimated Daily Boardings in 2030
- Operational in Late 2021

LRT Alignment



**Complete
Fall 2021**



**UC San Diego
West Campus Station**

LIGHT RAIL TRANSIT



LIGHT RAIL TRANSIT – WEST CAMPUS STATION



LIGHT RAIL TRANSIT – EAST CAMPUS STATION

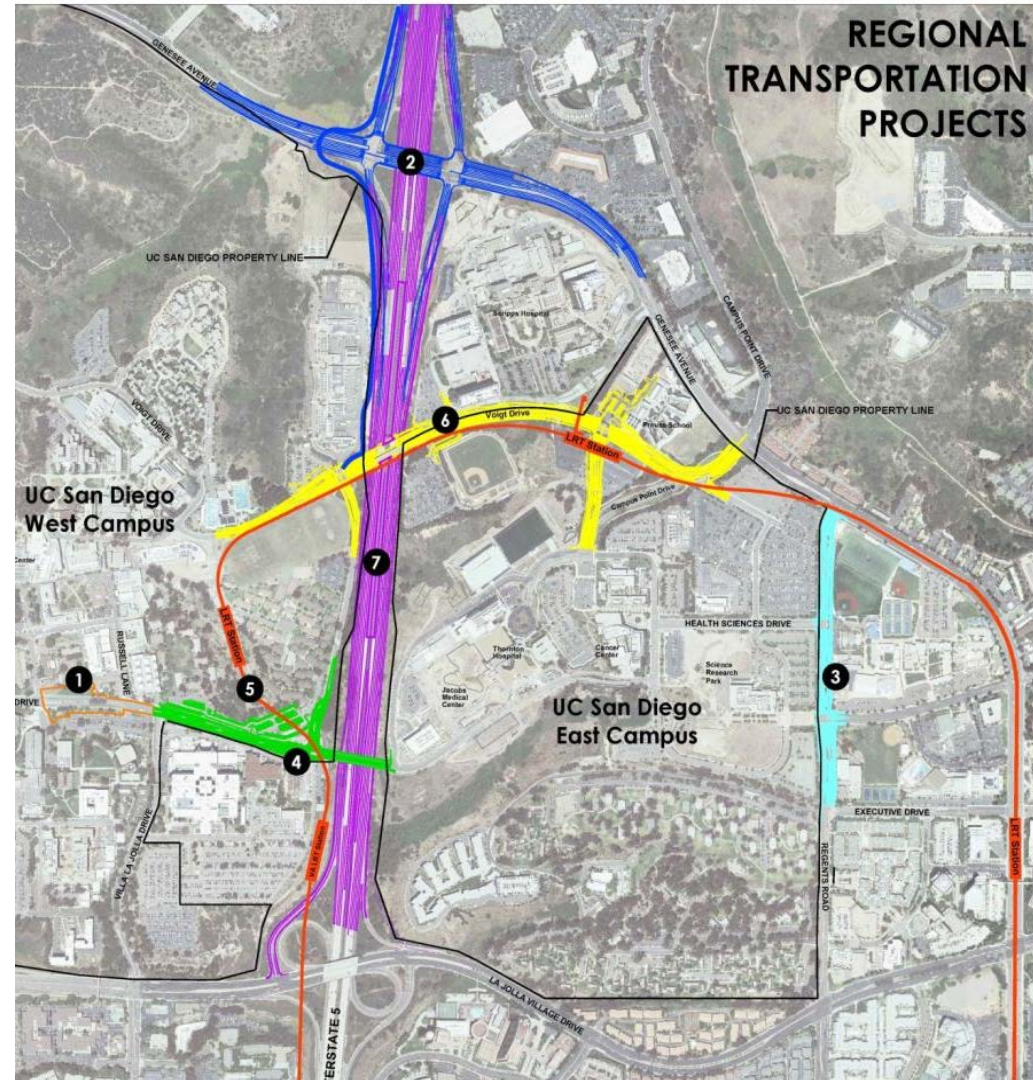
Regional Transportation Improvements



Development Trends

Transportation improvements on campus and in proximity will:

- Improve access and circulation
- Reduce congestion
- Reduce parking demands
- Connect UC San Diego to downtown, to other higher education institutes and beyond...





**Complete
Spring 2018**

GENESEE AVE IMPROVEMENTS

**Complete
Jan 2019**



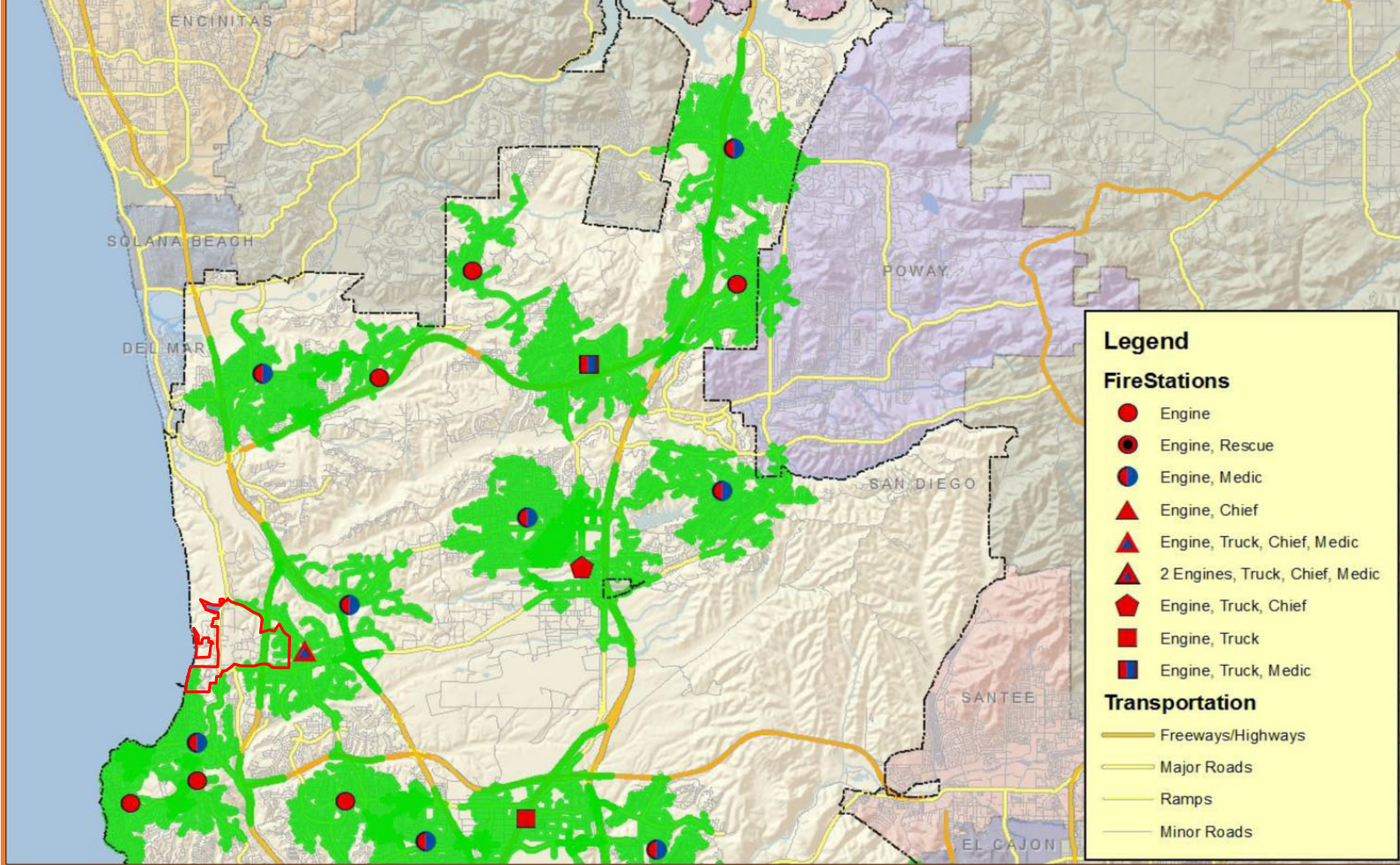
GILMAN BRIDGE

Fire Station Update



- UCSD has been working with the City San Diego on Development Agreement
- UCSD will fund design and construction and transfer the property to the City
- City will equip and operate the facility
- Budget \$20-23 million, occupancy 2021-22
- City of San Diego Fire Station and Facilities Design and Construction Standards
- Approx 12,000 GSF, standard fire station crew of 12 personnel
- 3-4 drive through fire apparatus vehicle bays, administrative offices, kitchen and dining area, day room, reception/watch room, training room wash room, exercise room, crew quarters
- Exterior improvements: emergency generator, flag pole, mailbox, fire hydrant, trash enclosure, signage, security fencing, fueling facilities, truck wash area, hose drying area, drought tolerant landscaping, and parking

**San Diego Fire Dept.
Map 3
4 Minute
Engine Travel
North View**





FIRE STATION



FIRE STATION