

February 2019 Brown Bag Lunch Presentations

Presentation 1: Campus Research Machine Shop

Presentation 2: El Nino Winter Storm Season Update

Campus Research Machine Shop

Taking your creation
From mind to hand



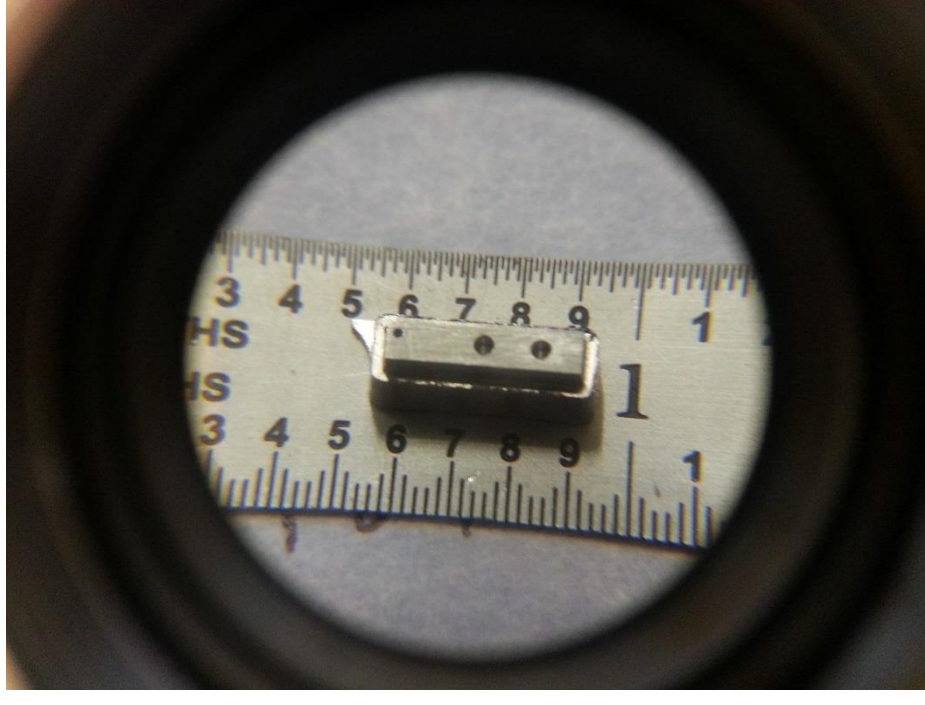
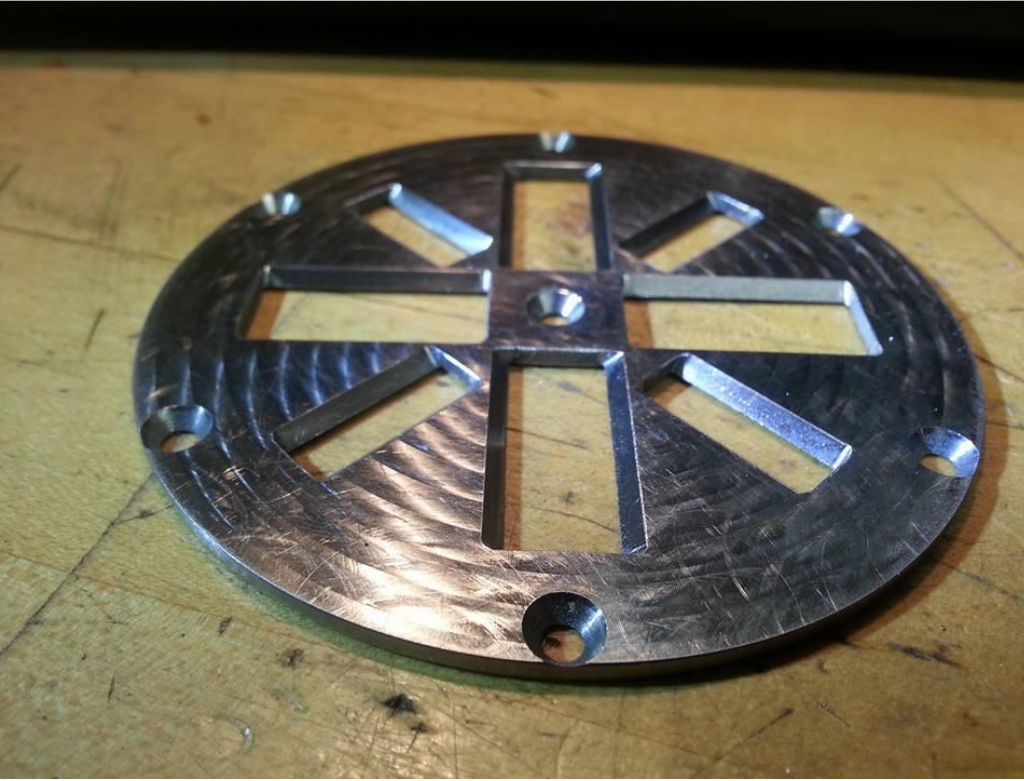
Services

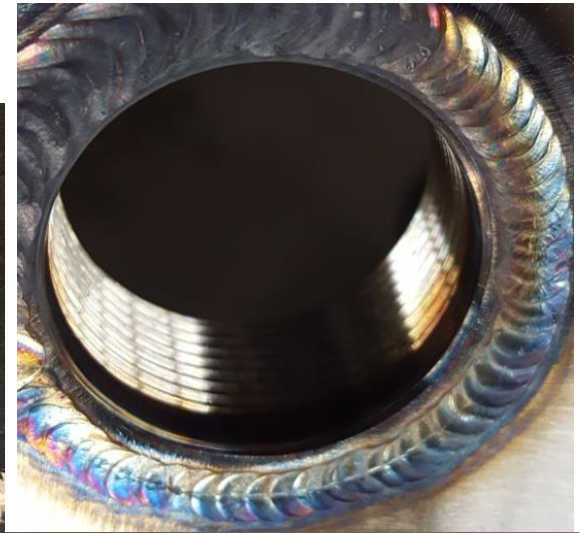
- CNC and Manual Milling - 2, 3 and 4 axis
- CNC and Manual lathes from micro work to extreme sizes
- Mastercam and Solidworks as well as G-code/Conversational programming
- High tolerance comfotability, within 0.0002” (0.005mm) tolerance
- Medical machining and welding
- Micro Welding to Large-scale Welding
- GTAW (TIG) welding all materials, including Stainless, Aluminum, Inconel, Copper, Hastelloy, etc.
- GMAW (MIG), SMAW (Shielded ARC), Oxy Acetylene, Plasma welding and cutting
- Vacuum pump system design, manufacture, repair and testing
- Wire EDM and Sinker EDM (Electrical Discharge Machining)

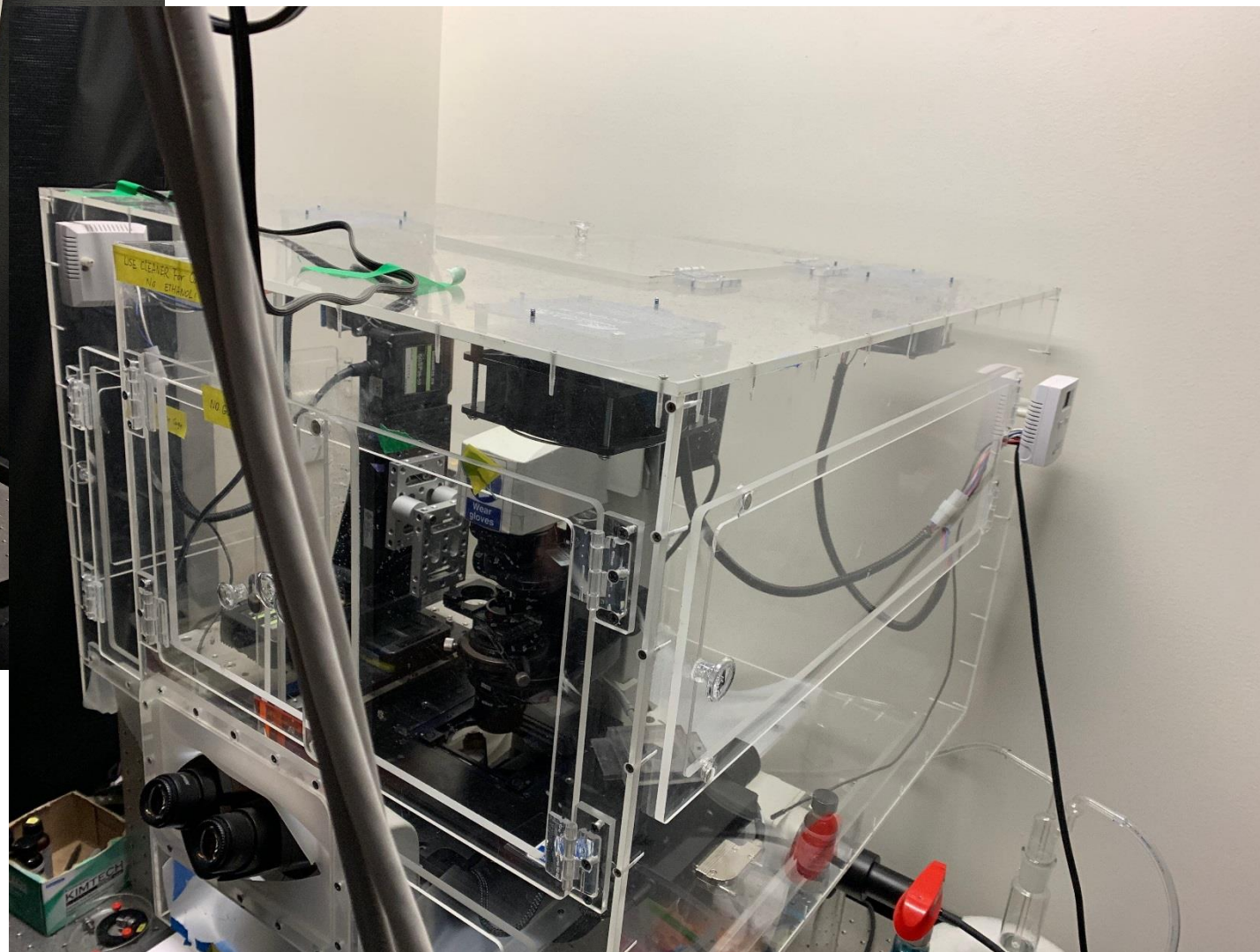
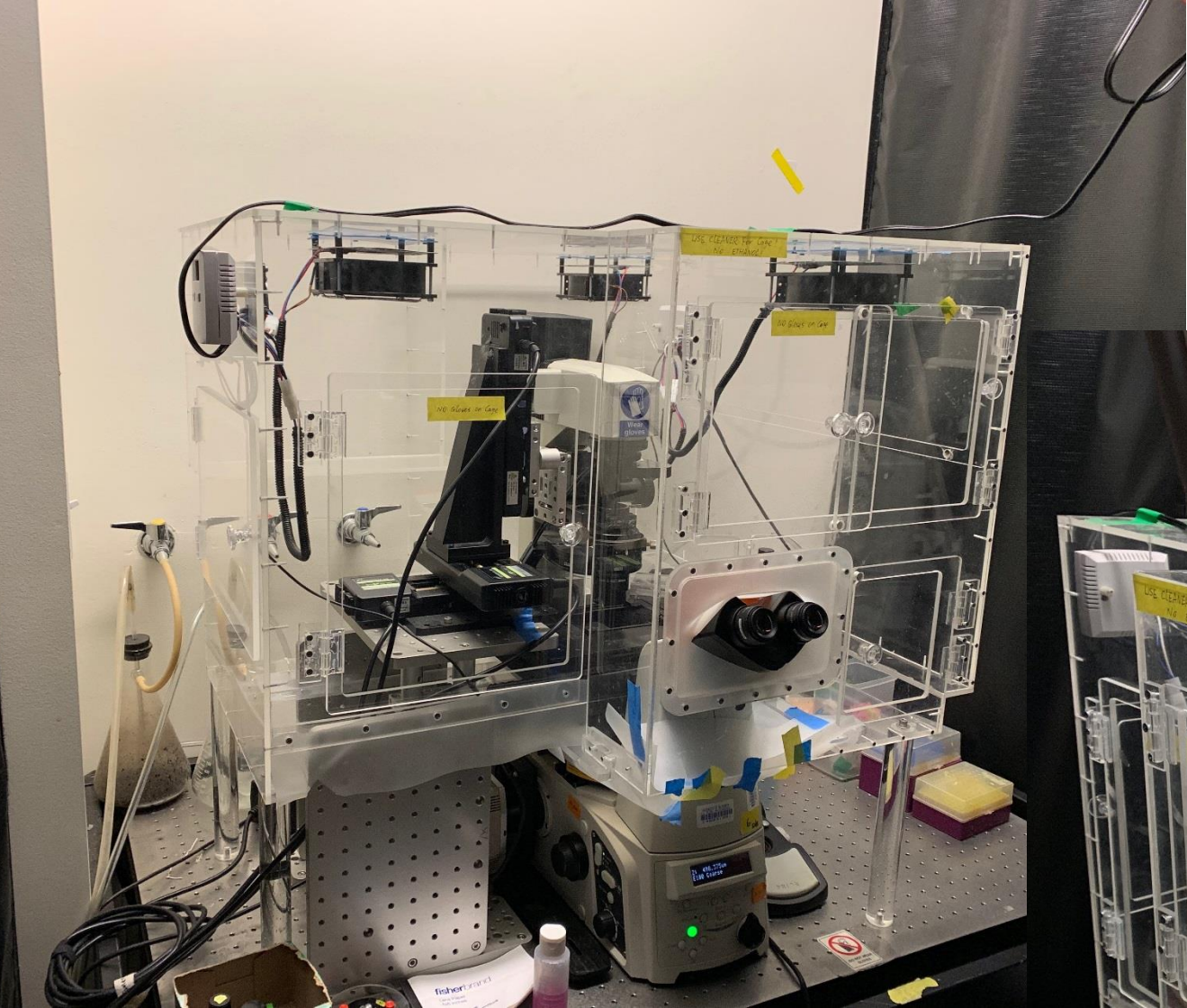
Services cont.

- Sheet Metal Fabrication
- Structural Fabrication
- Blueprint Design and Reverse Engineering
- Design and Project Consultation
- Precision Grinding both round and flat
- Waterjetting
- On-site repair and consultation including welding
- Plastic work including Acrylic, Polycarbonate, PVC, Teflon, HDPE, etc.
- Extensive Hardware, O-ring, Plastic and metal stock including exotics
- Estimates and/or Quoting available

A









CRMS

Mon – Fri
7am-3:30pm

(858)534-2910

CRMS-CS@ucsd.edu

*Located in the basement of Urey Hall



El Nino Winter Storm Season Update



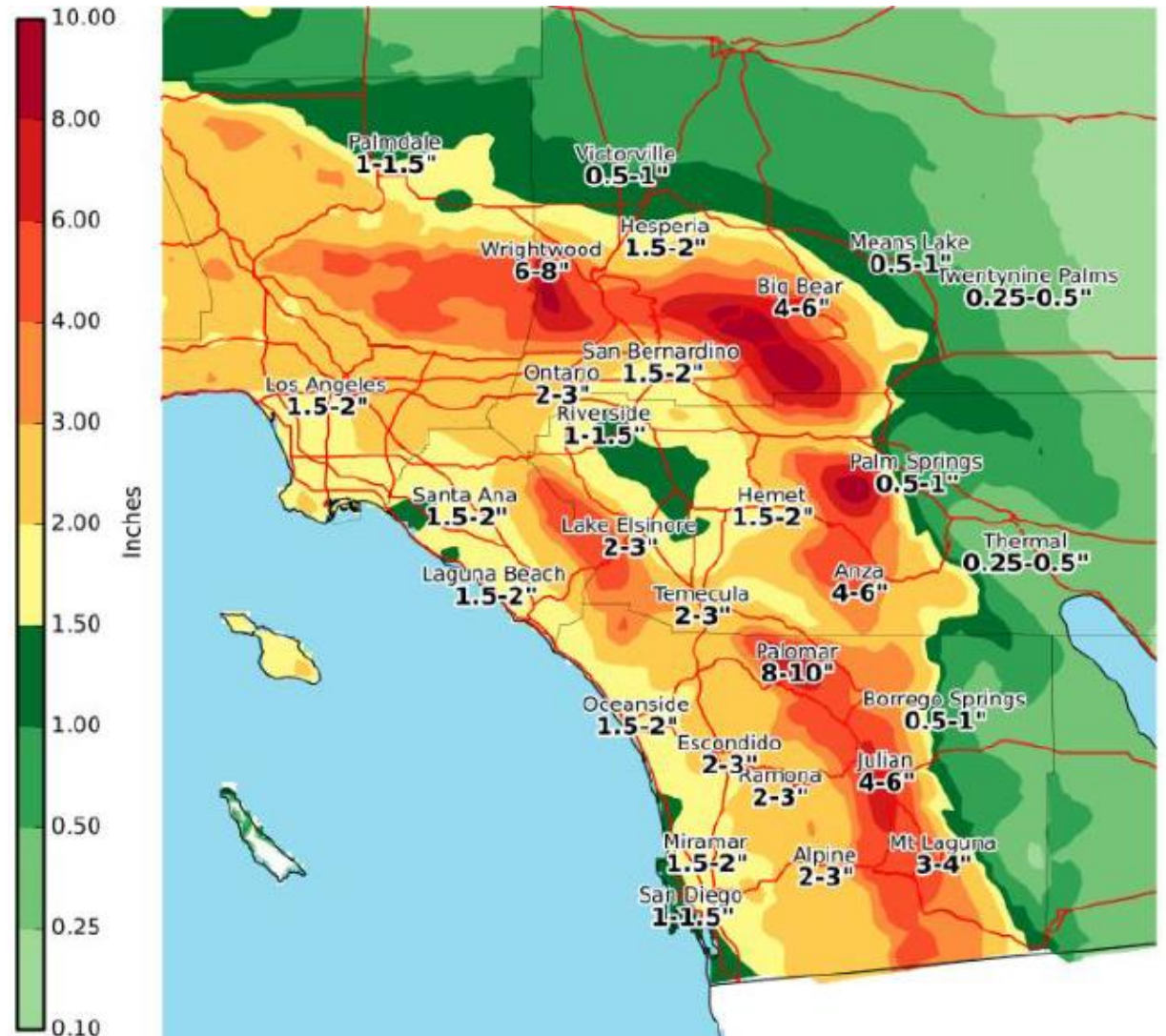
26FEB19

Agenda

- Winter Rain Accumulation & Various Campus Metrics
- Current snapshot of storm related Work Requests
- FM Response Posture

Winter Rain Accumulation

- So far this season, the campus has received 12.09 inches of rain (5.33 inches just between 01-14FEB!).
- Campus Irrigation has been secured since 28NOV19 saving an estimated 5.5MGAL in reclaimed and potable water.

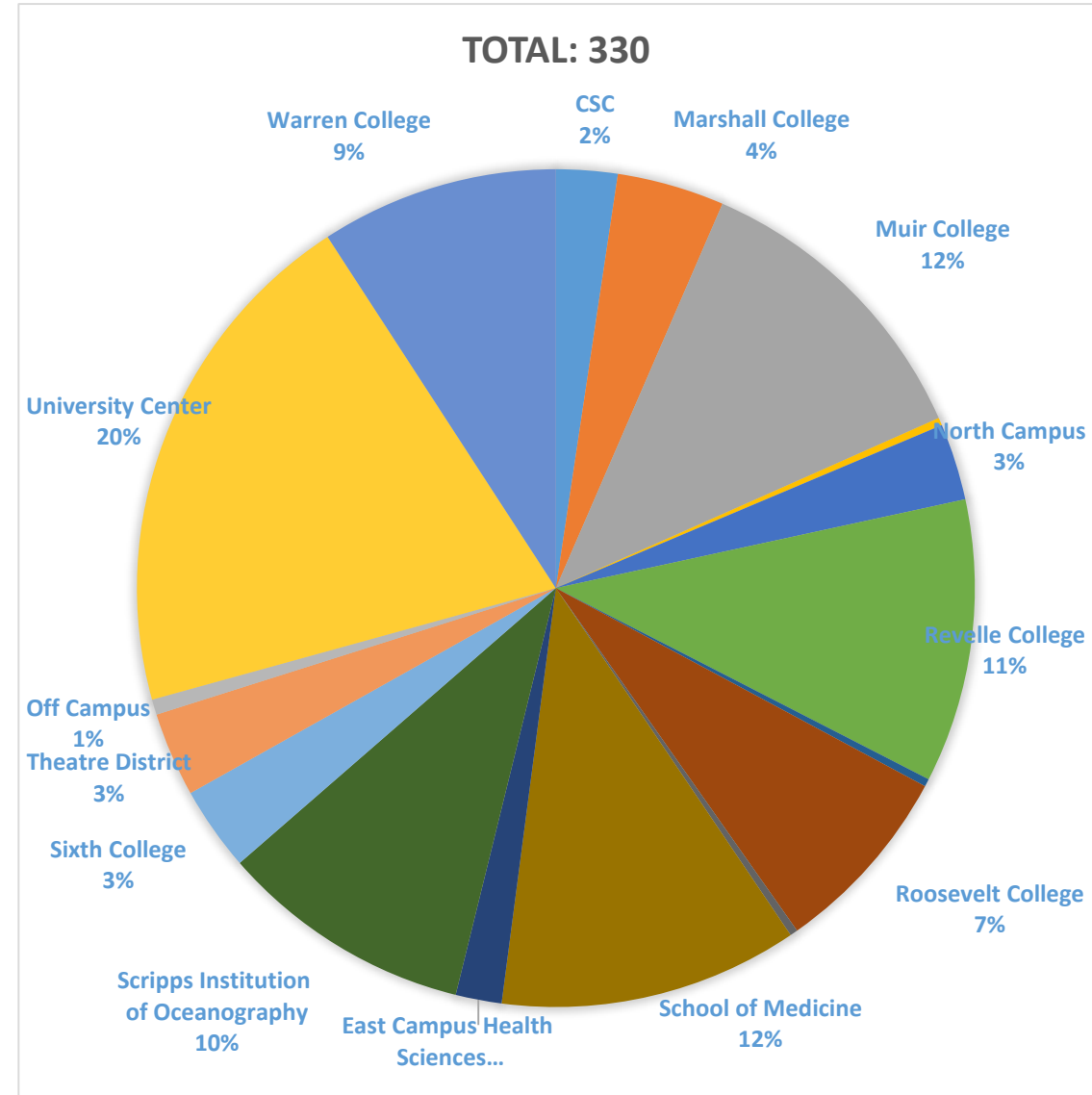
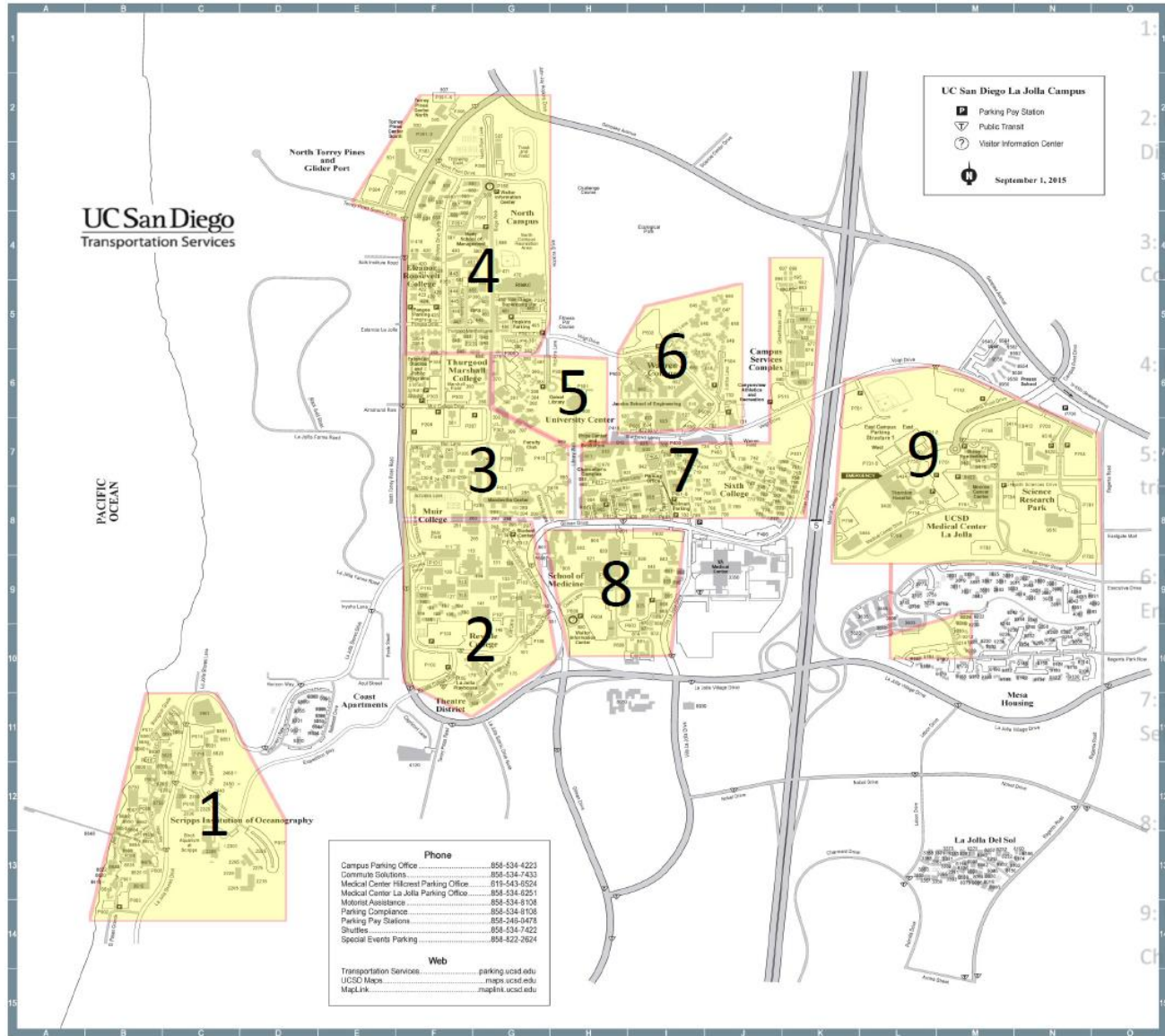


Winter Storm Season Metrics

- The campus experienced 28 total tree failures during the storm of 14FEB. These trees ranged in size from 12-50' tall.
- 750 sand bags have been created and distributed.
- 2,200 linear feet of wattles have been distributed so far to address soil erosion issues.



Work Requests



Work Requests

LOCATION	OUTSTANDING	COMPLETED
East Campus Health Sciences	4	2
Campus Services Complex	8	0
Marshall College	11	3
Mesa Housing	1	0
Muir College	29	11
East Campus Academic	1	0
North Campus	8	2
Revelle College	25	12
Roosevelt College	18	7
School of Medicine	30	6
Scripps Institution of Oceanography	28	8
Sixth College	9	2
Theatre District	8	3
University Center	56	12
Warren College	16	7
Elliot Field Station	<u>3</u>	<u>0</u>
	255	75

FM Storm Response

In the event the National Weather Service (NWS) issues a Storm Advisory that is expected to result in sustained heavy rains or severe thunderstorms, FM will execute the following:

1. 48 hrs out:

- a) Stockpile/fwd deploy sandbags, check sump pumps & other flood remediation equipment & gear
- b) Solicit FM Volunteer list for storm coverage (Bldg Ops, Landscape, Bldg Svc , PM's, WSC)

2. 24 hrs out:

- a) Inspect storm drains/roof drains/waddles
- b) Forward deploy gear (pumps, hoses, wet vacs, mops, extension cords, etc.)
- c) Finalize FM volunteer list
- d) FM Notification – Inform campus of potential storm event, provide Self-Help tips, and provide assistance to those who would like additional material support (sand bags, absorbent rolls, plastic sheets, etc.)

FM Storm Response

3. 1-hr out:

- a) Forward Deploy Teams (Bldg Ops, Landscape, Bldg Svc, PM's)
- b) Set up sand bag, absorbing mats, and water pig barriers in known trouble spots
- c) FM Notification on storm event – Inform campus of forward deployed teams and how best to report flood damage
- d) Notify Flood Remediation Contractors to dispatch crews for support.

4. During Rain Event:

- a) WSC to gather, organize, and prioritize incoming Work Requests and dispatch designated crews.
- b) Routine status updates from deployed teams to be directed to Customer Relations Manager and Work Management Manager.

QUESTIONS ?